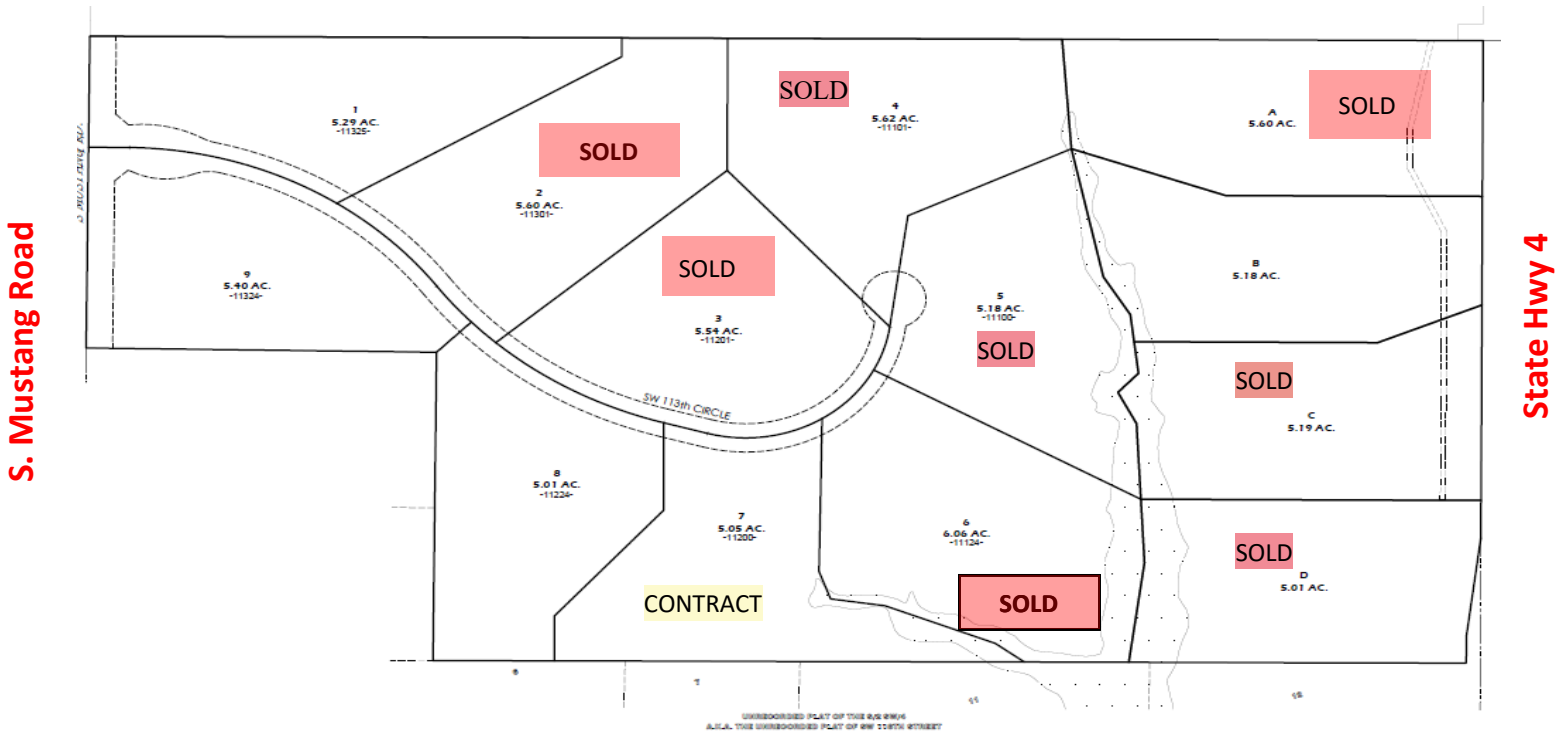


# REDCLIFF CANYON

## 5 Acre Tract Residential Development

Mustang, Oklahoma

Final Plat



11300 S. Mustang Road

Utilities: Well and Septic

Pricing: Lots starting at \$151,900

AVAILABLE

NOW

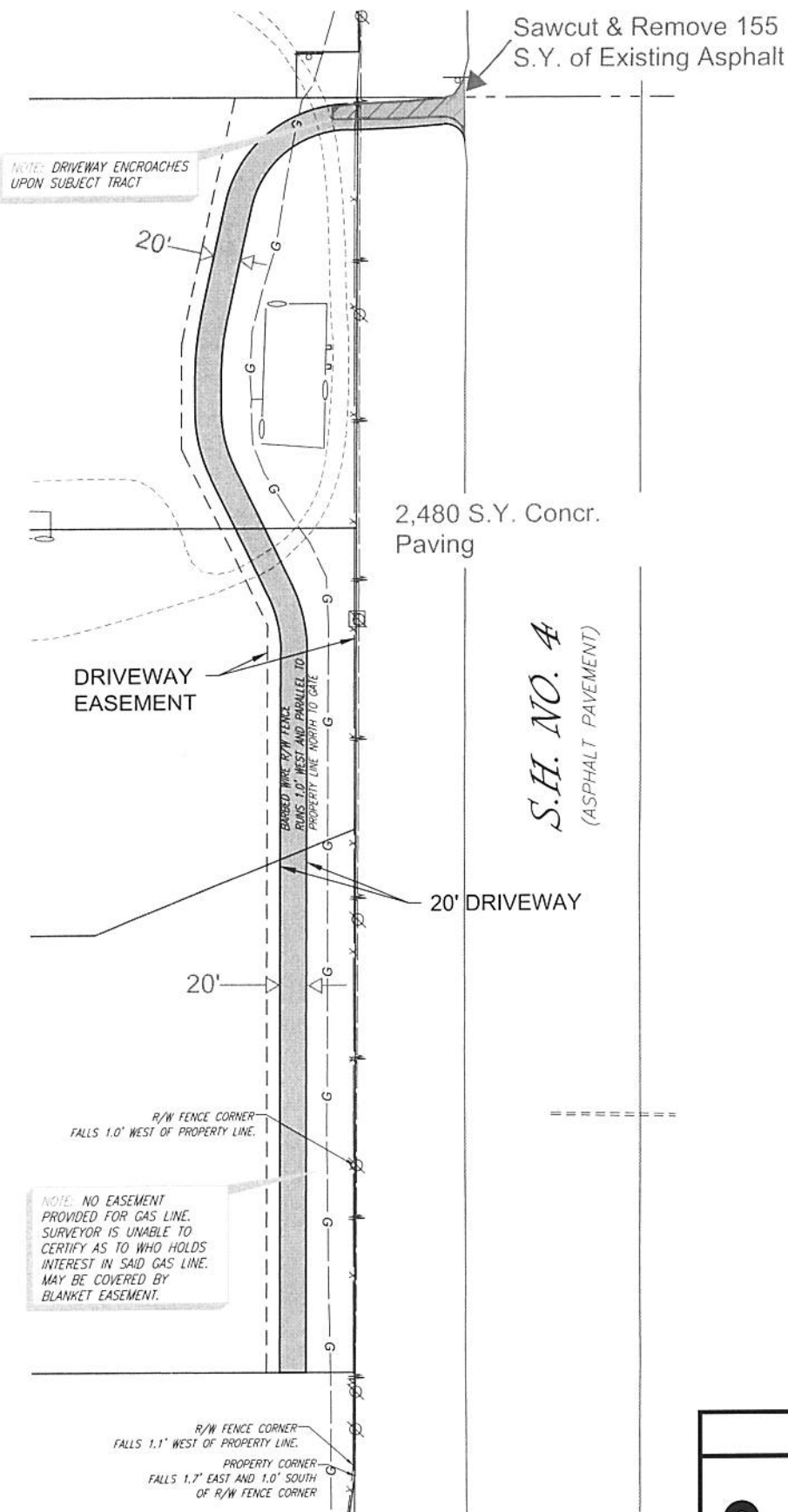
**CROUT COMPANIES**  
LAND DEVELOPERS

Lindsay McDaniel- 405-376-3704- [lindsay.croutcompanies@yahoo.com](mailto:lindsay.croutcompanies@yahoo.com)

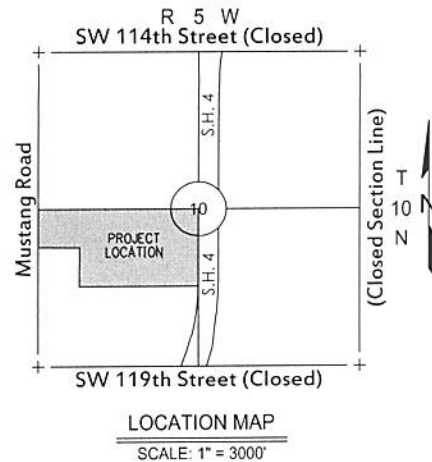
Lawson Crout- 405-760-3909- [lawsonciv@aol.com](mailto:lawsonciv@aol.com)

**Redcliff Canyon  
Lot Price Sheet  
9/6/2024**

<u>Tracts</u>	<u>STATUS</u>	<u>NOTES</u>	<u>ACRE</u>	<u>PRICING</u>
<b>1</b>	<b>Available</b>		<b>5.29</b>	<b>\$167,900.00</b>
<b>7</b>	<b>Tagged</b>		<b>5.05</b>	<b>\$177,900.00</b>
<b>8</b>	<b>Available</b>		<b>5.01</b>	<b>\$172,900.00</b>
<b>9</b>	<b>Available</b>		<b>5.40</b>	<b>\$167,900.00</b>
<b>B</b>	<b>Available</b>		<b>5.18</b>	<b>\$151,900.00</b>



*S.H. NO. 4*  
(ASPHALT PAVEMENT)



SCALE: 1" = 120'  
BASIS OF BEARING = N 00°36'39" E  
WEST LINE  
SECTION 10, T10N, R5W, I.M.

ATTACHMENT A

REDCLIFF CANYON DRIVEWAY EXHIBIT



**Crafton Tull**  
architecture | engineering | surveying  
405.787.6270 | 405.787.6276 |  
www.craftontull.com

SHEET NO.: 1 of 1  
DATE: 12/03/18  
PROJECT NO.: 18614100

# **Redcliff Canyon** **Preferred Builders List**

## **J. Hill Homes**

Jeremy Hill (405)408-9602

[jhillhomes@gmail.com](mailto:jhillhomes@gmail.com)

[www.jhillhomes.com](http://www.jhillhomes.com)

## **Platinum Homes, LLC**

Josh Julian (405)664-6196

[info@platinumhomesokc.com](mailto:info@platinumhomesokc.com)

[www.platinumhomesokc.com](http://www.platinumhomesokc.com)

## **Aaron Tatum Homes**

Aaron Tatum (405)409-0027

[aaron@tatumhomes.com](mailto:aaron@tatumhomes.com)

[www.tatumhomes.com](http://www.tatumhomes.com)

## **Manchester Elite Homes**

Larry Mattocks (405)409-8000

[larry@manchesterokc.com](mailto:larry@manchesterokc.com)

[www.manchesterokc.com](http://www.manchesterokc.com)