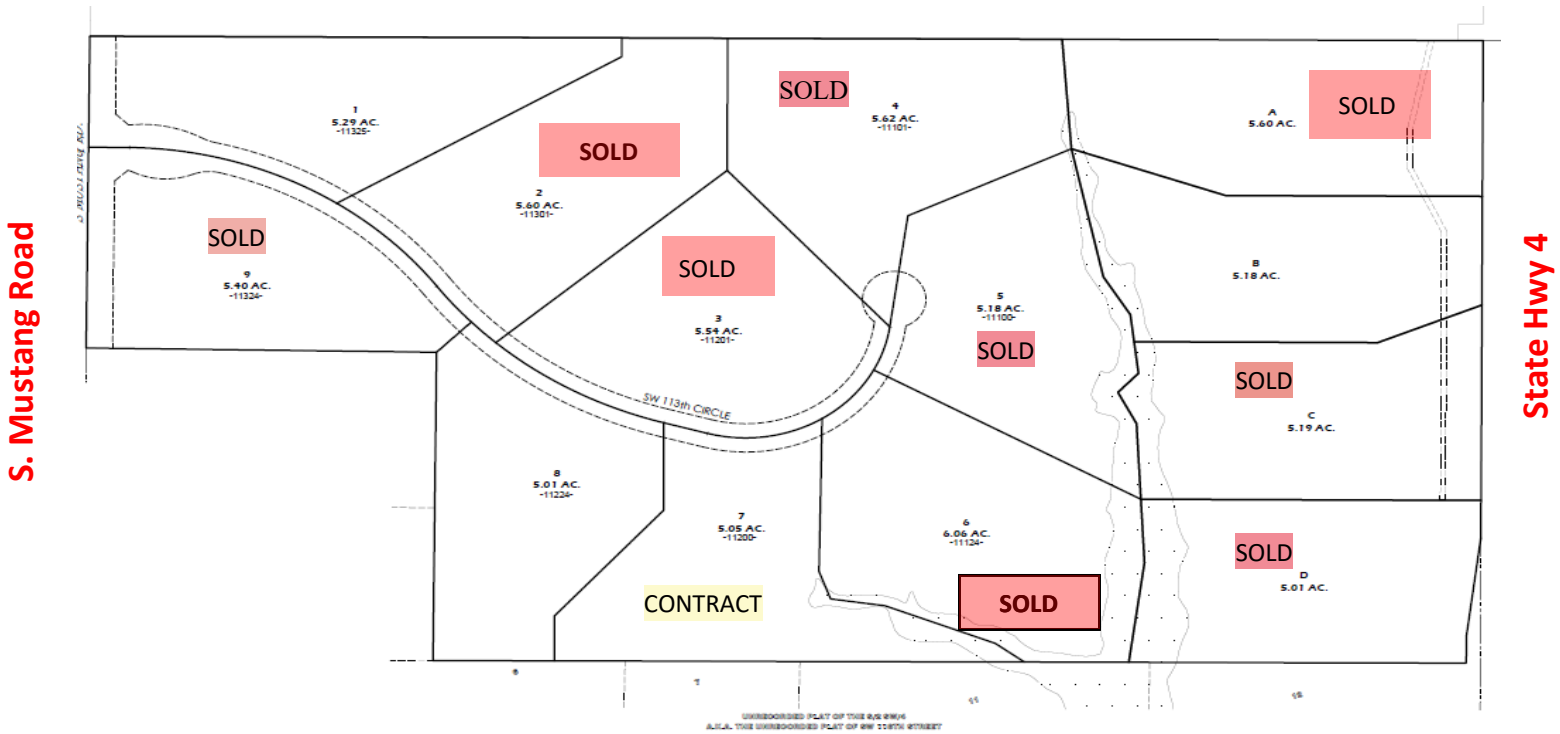


REDCLIFF CANYON

5 Acre Tract Residential Development

Mustang, Oklahoma

Final Plat



11300 S. Mustang Road

Utilities: Well and Septic

Pricing: Lots starting at \$151,900

AVAILABLE

NOW

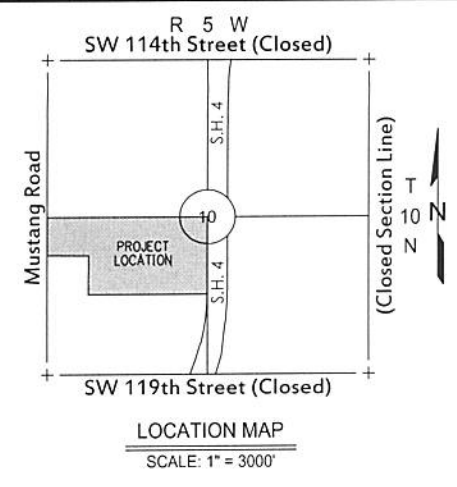
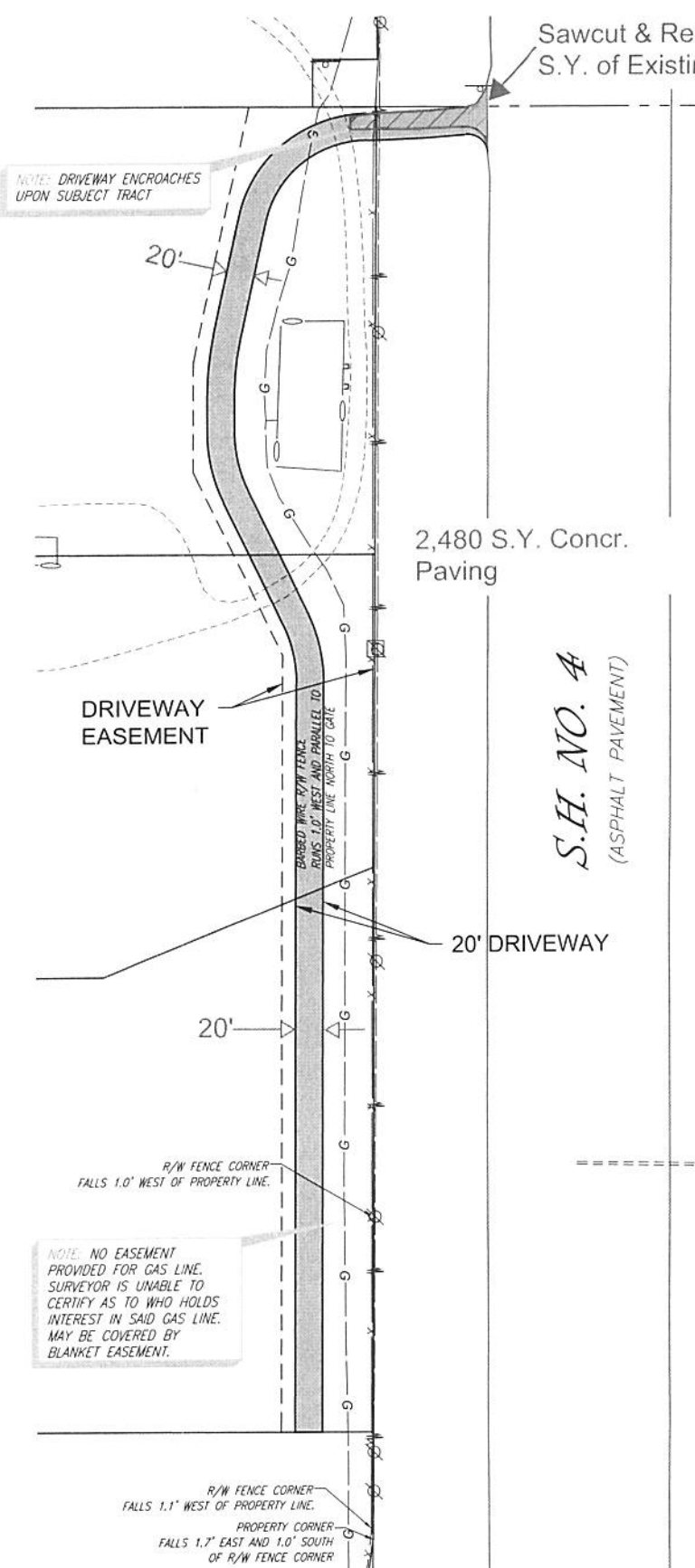
CROUT COMPANIES
LAND DEVELOPERS

Lindsay McDaniel- 405-376-3704- lindsay.croutcompanies@yahoo.com

Lawson Crout- 405-760-3909- lawsonciv@aol.com

**Redcliff Canyon
Lot Price Sheet
9/6/2024**

<u>Tracts</u>	<u>STATUS</u>	<u>NOTES</u>	<u>ACRE</u>	<u>PRICING</u>
1	Available		5.29	\$167,900.00
7	Tagged		5.05	\$177,900.00
8	Available		5.01	\$172,900.00
9	Available		5.40	\$167,900.00
B	Available		5.18	\$151,900.00



SCALE: 1" = 120'
 BASIS OF BEARING = N 00°36'39" E
 WEST LINE
 SECTION 10, T10N, R5W, I.M.

S.H. NO. 4
 (ASPHALT PAVEMENT)

ATTACHMENT A

REDCLIFF CANYON DRIVEWAY EXHIBIT	
 <p>Crafton Tull architecture engineering surveying 405.787.6270 405.787.6276 www.craftontull.com</p>	SHEET NO.: 1 of 1 DATE: 12/03/18 PROJECT NO.: 18614100
<small>CERTIFICATE OF AUTHORIZATION: CA 973 (PE) IS EXPIRES 6/30/2020</small>	

Redcliff Canyon **Preferred Builders List**

J. Hill Homes

Jeremy Hill (405)408-9602

jhillhomes@gmail.com

www.jhillhomes.com

Platinum Homes, LLC

Josh Julian (405)664-6196

info@platinumhomesokc.com

www.platinumhomesokc.com

Aaron Tatum Homes

Aaron Tatum (405)409-0027

aaron@tatumhomes.com

www.tatumhomes.com

Manchester Elite Homes

Larry Mattocks (405)409-8000

larry@manchesterokc.com

www.manchesterokc.com